

IN ORDER TO CARRY OUT THE UPDATE OF THE USB EXTENDER KIT, YOU WILL NEED THE FOLLOWING:

- PC / Laptop with Windows OS
- A USB-C cable (with all data pins connected)

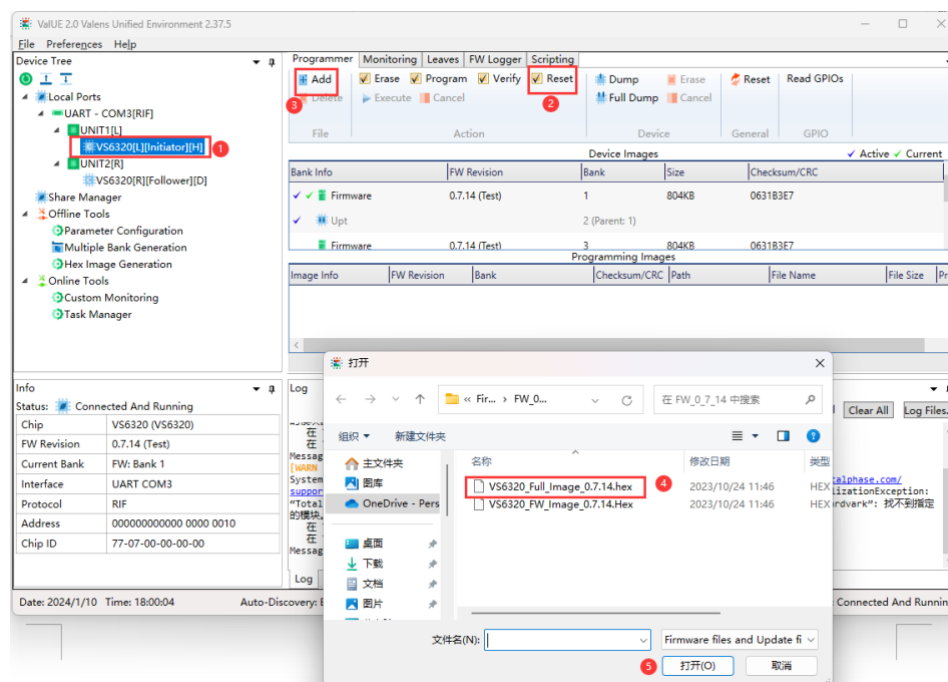
VS6320 FIRMWARE UPGRADE GUIDE

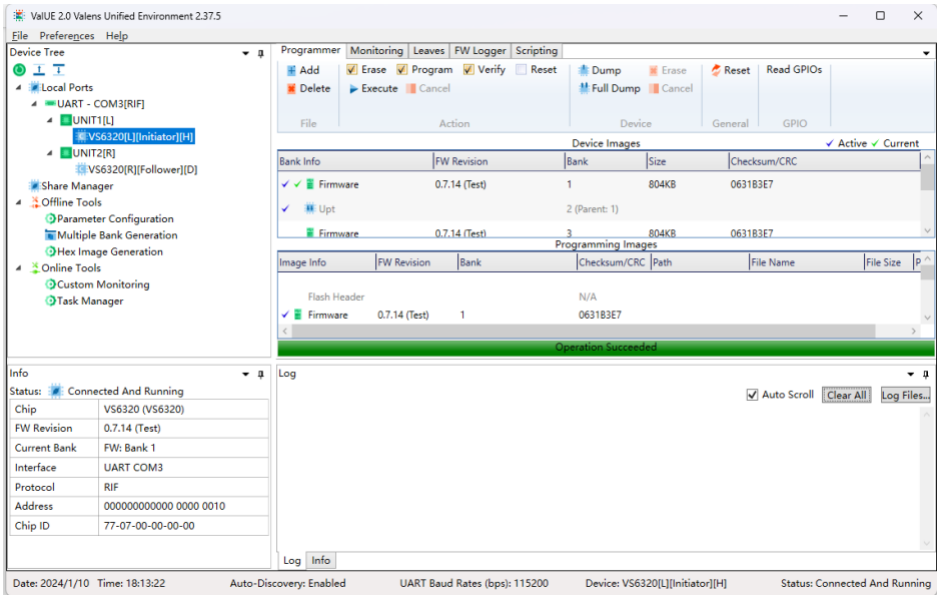
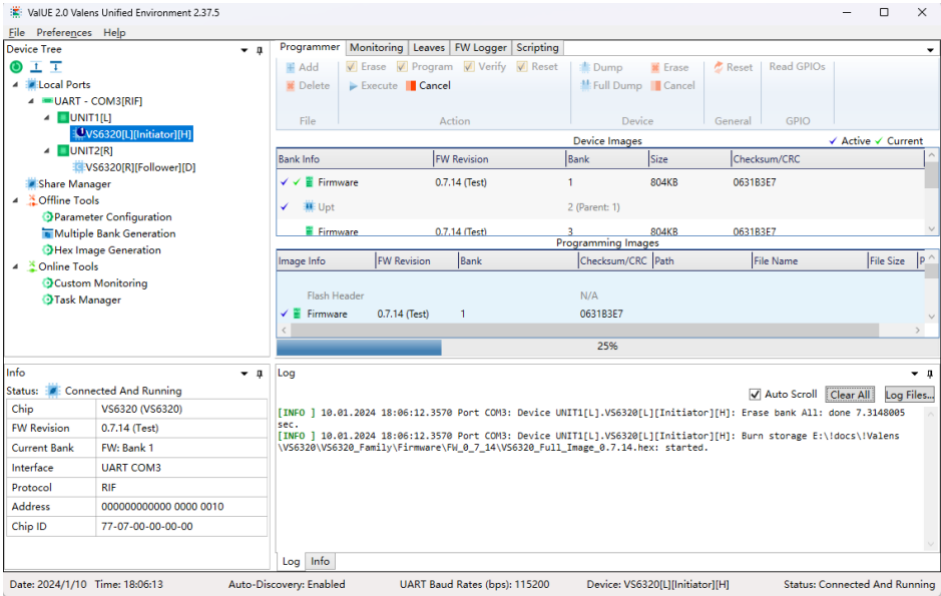
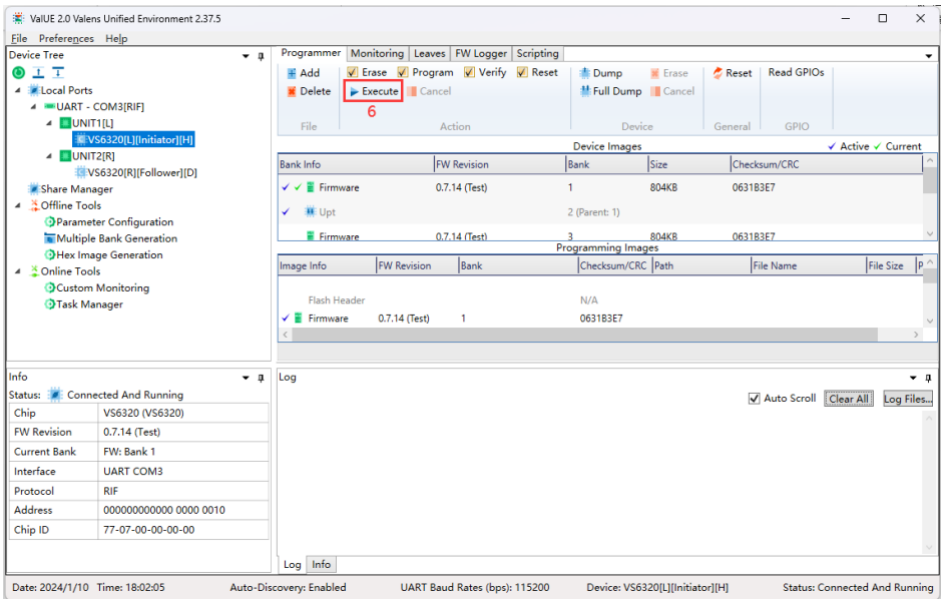
1. System connection:

- Connect Host (TX) SERVICE port to your laptop through a USB-C to USB-A cable.
- Connect Host (TX) and Device (RX) with a CAT cable so that you can upgrade RX FW from TX directly.
- Connect power supply to Host (TX) or Device (RX) (PoC enabled).
- Power on system.

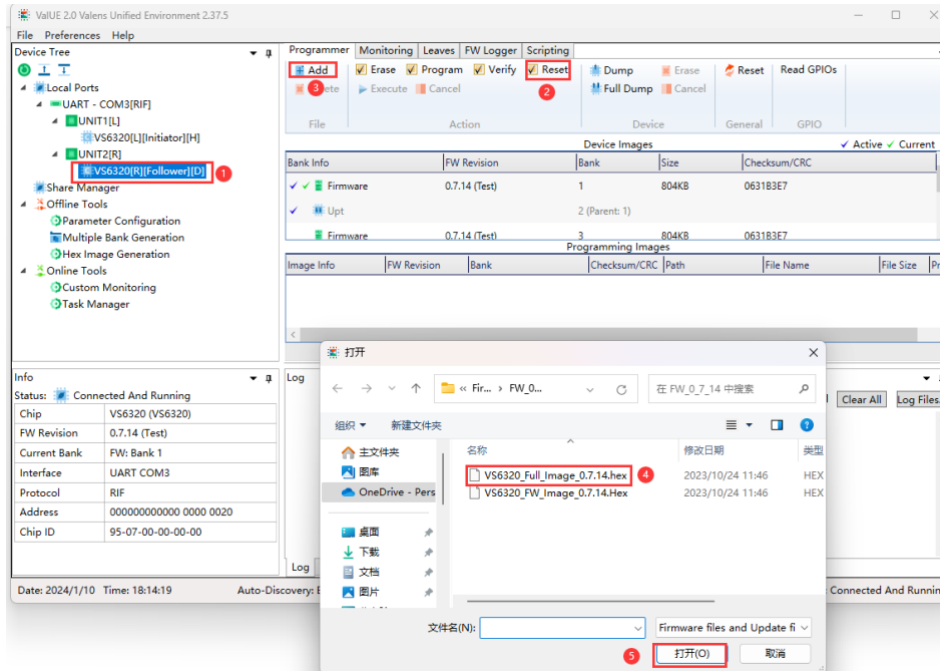
2. FW upgrade:

- Open Valens VALUE 2.0 program in your laptop.
- Select TX VS6320[L][Initiator][H].
- Select Reset.
- Add FW file.
- Execute TX FW upgrade.





- f. Select RX VS6320[R][Follower][D].
- g. Select Reset.
- h. Add FW file.
- i. Execute RX FW upgrade.
- j. Finish.



Once the update has completed close the ValUE update tool, disconnecting the updated device.